



**MADHUBEN & BHANUBHAI PATEL INSTITUTE OF TECHNOLOGY**  
(A CHARUTAR VIDYAMANDAL INSTITUTION)

PO BOX NO.8, BEYOND GIDC PHASE IV, VITHAL UDYOGNAGAR - 388121, DIST. ANAND, GUJARAT, INDIA.  
TELE FAX: +91 2692-230823 EMAIL: PRINCIPAL@MBICT.AC.IN WEB: WWW.MBIT.EDU.IN

### **Report on “Gender Biasing”**

Women Development Cell, MBIT organized a webinar on “Gender Baising” on 6<sup>th</sup> July 2020 for staff and students of all CVM institute . We have recived 90+ registration in this webinar.The aim of this webinar due to complexity of gender issues and overall desire to create an equitable society has lead legal systems with an interest in eliminating gender bias to institute laws prohibiting overt gender prejudice.

The webinar was successfully conducted by one of the distinguished personality Ms Megha Joshi . She is a practicing psychologist and writer.She is M.A Clinical Psychology ,Diploma in Special Education, and P.G. Diploma in Guidance and Counseling .Special B Ed in Mental Retardation and Research scholar in the field of Psychology.

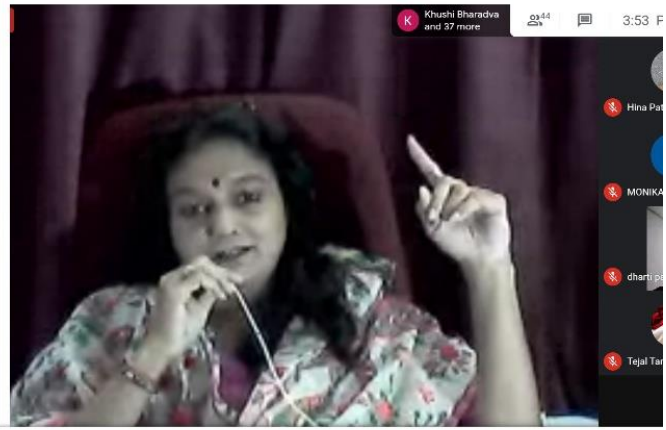
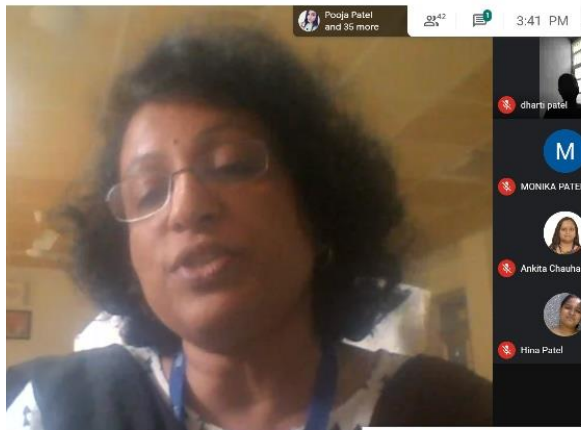
Apart from academic experience she is a popular speaker and is being invited by various institutions regularly. she has been a columnist since last 3 years in - Divya Bhaskar), MADHURIMA (WEEKLY MAGAZINE under her column “WOMANOLOGY”. Her topics range from complex to everyday societal issues related to the fast changing landscape for Women in our country, written 135 articles till date. She also contributes to a widely read Weekly newspaper column named “MANOGRAM” in a local newspaper Sardar Gurjari for the past five years having completed 240 articles.

Mrs. Megha Joshi have discussed that, Gender is a social construct that impacts attitudes, roles, responsibilities, and behavior patterns of men and women in all societies. She has discussed that Gender refers to the roles and responsibilities of men and women that are created in our families, our societies and our cultures. She has clearly defined the concept of gender which includes the expectations held about the characteristics, aptitudes, and likely behaviors of both women and men (femininity and masculinity). With an example, she has explained gender biases in language, traditions, and the workplace have tended to historically favor men and produce undesirable consequences for women. Madam has Identified the gender issues and gender bias in India. She has given different examples of gender biasing for men and women She has explained gender bias in school, society, and household Responsibilities.she has also shared her own experience and define where gender biasing occurs. She told that Bias can be conscious or unconscious, and may manifest in many ways, both subtle and obvious, Gender bias can be subtle or overt, and can result in small or large consequences.



## MADHUBEN & BHANUBHAI PATEL INSTITUTE OF TECHNOLOGY (A CHARUTAR VIDYAMANDAL INSTITUTION)

PO BOX NO.8, BEYOND GIDC PHASE IV, VITHAL UDYOGNAGAR - 388121, DIST. ANAND, GUJARAT, INDIA.  
TELE FAX: +91 2692-230823 EMAIL: PRINCIPAL@MBICT.AC.IN WEB: WWW.MBIT.EDU.IN



**WDC MBIT**



**Mrs. Megha Joshi**  
Psychologist and Columnist

Register here....  
<https://forms.gle/cUmL5o4fzZbH1vQA>

Topic - "Gender Biasing"  
Date - 6th July, 2020  
Time - 3:30 pm to 4:30 pm

Madhuben & Bhanubhai Patel Institute of Technology  
(A Constituent Institute of CVM University)

[www.mbit.edu.in](http://www.mbit.edu.in) [MBICT.CVMUniversity](https://www.facebook.com/MBICT.CVMUniversity) [mbit.cvmuniversity](https://www.instagram.com/mbit.cvmuniversity)

**REC**

Webinar on "Gender Biasing"

People (50) 49

Add people

- Sunayana Domadia (You)
- Aayushi Patel
- Ankita Chauhan
- ayushi patel
- Bhakti Punjabi
- Charmy Thacker
- Devanshi Patel
- dharti patel
- Tejal Tandel